



# Witley C of E Infant School



Learn, love and flourish together

Newsletter no. 24 Spring Term  
Friday 17<sup>th</sup> March 2023

Our value this half term is resilience

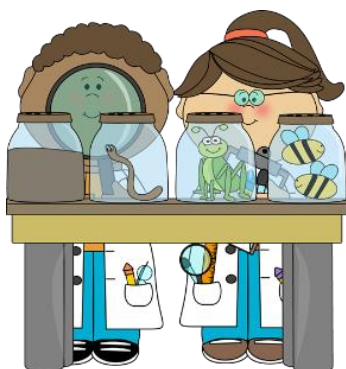
*Be kind hearted – Ephesians 4:32*



Dear Everyone

Shrove Tuesday, known as Pancake Day, seems so long ago now and we are still in the period of LENT in the Christian calendar. Many people are showing great strength of character not to give in and eat that bar of chocolate, resisting the urge to play on the Play Station after tea or resisting that glass of Prosecco. Well done if you haven't given in yet! This year Lent ends on 6<sup>th</sup> April.

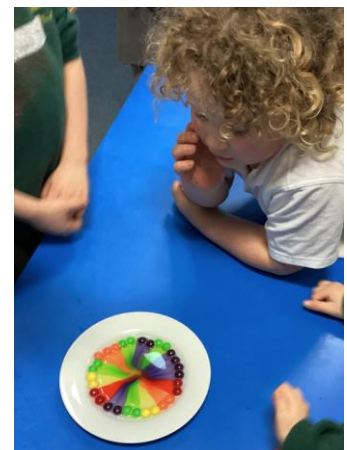
Mothering Sunday is a day honouring mother churches, the church where one is baptised and becomes "a child of the church", celebrated since the Middle Ages in the United Kingdom, Ireland and some Commonwealth countries on the fourth Sunday of every Lent. Happy Mother's Day to all for this coming Sunday. Our Year R Class have been making something special as well as learning about plants in our science curriculum. We have also focused on handwriting this term and the children have made very good progress writing labels and cards. They all wrote their labels and cards independently.



On Monday we held our science afternoon and the children mixed year groups taking part in a number of experiments.

Pupils worked scientifically, looking and observing closely, understanding processes and methods as well as having a fun time travelling to different classrooms.

We hope they shared their learning with you!

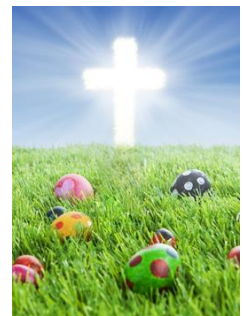




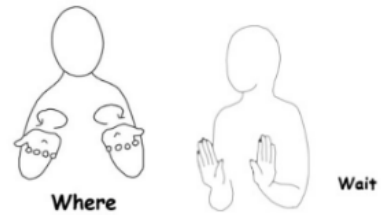
Our **Easter Service** will be at 2.30 pm on Monday, 27<sup>th</sup> March at All Saints Church, parents are invited. Our children will sit towards the front. We hope many of you will join us.

Finally, Hen House are open on INSET day on Monday, 17<sup>th</sup> April. Please see flyer later on in our newsletter.

Have a great weekend!  
Mrs Helen Szczepanski  
Headteacher



## This week's Makaton signs



## Well done to the following children who are in our Gold Book this week:

Reception: Oran and Indy

Year 1: Oscar and Oskar

Year 2: Max and Dilly



This week's Gold Book assembly Headteacher's award goes to Vinny in Year 1

## Cake Raffle Winner

This week's joint winners are Arlo and Isla in Year R

Thank you to the Westhead family for the fancy chocolate castle!



## SPRING CLEAN - we are collecting clothing!

Please put any good quality items in a bag (they do not supply them anymore) and drop off in the small shed in the playground. Rag Bag **can only accept** the following items:

- Good quality wearable men's, ladies & children's clothing
- Paired shoes (tied together)
- Handbags and belts



**PLEASE DO NOT PUT SCHOOL UNIFORM IN THE BAGS.** Thank you

Collection will be a couple of weeks.

## SPRING TERM 2023

Throughout March we have our Spring Cleaning Month! We hope you the children are helping out at home and in the garden.



Monday 27<sup>th</sup> March – Easter Service at All Saints Church 2:30pm – parents welcome

Tuesday 28<sup>th</sup> March - Parent/Carer consultations 1 pm – 6.30 pm in the Jubilee Hall –

**BOOKINGS NOW OPEN VIA ARBOR**

Thursday 30<sup>th</sup> March – Easter Egg Hunt

End of term - Friday 31<sup>st</sup> March – **EARLY FINISH 1.30 pm**



### **SUMMER TERM 2023**

**Saturday 15<sup>th</sup> April – DIY DAY at school**

**\*Monday 17<sup>th</sup> April – INSET DAY 4**

Start of term - Tuesday 18<sup>th</sup> April

**Bank Holiday – Monday 1<sup>st</sup> May – school closed**

**Bank Holiday – Monday 8<sup>th</sup> May – school closed – King Charles III Coronation**



Wednesday 10<sup>th</sup> May – Year 1 to Broadwater Multiskills Sports event

Saturday 13<sup>th</sup> May - WitStock event

Mid May – Year 2 SATs (Standard Attainment Tests)

**\*Friday 26<sup>th</sup> May – INSET DAY 5**

**Half term – Monday 29<sup>th</sup> May – Friday 2<sup>nd</sup> June**



**Week beginning 12<sup>th</sup> June – Year 1 Phonics Screening Test**

Wednesday 21<sup>st</sup> June – Year 1 to Brooklands Museum



**BROOKLANDS  
MUSEUM**

Wednesday 28<sup>th</sup> June - Class photos/siblings

End of term – Friday 21<sup>st</sup> July - **EARLY FINISH 1.30 pm**

### **TERM DATES 2023/24**

**Autumn Term 2023**

**INSET No. 1 – Friday 1<sup>st</sup> September**

School starts for Year 1 and Year 2 on Monday 4<sup>th</sup> September at 8.45 am

Autumn half term – 23 October to 27 October 2023

### INSET No. 2 – Monday, 30<sup>th</sup> October

Last day of term - 15 December 2023 – early finish 1.05 pm. PLEASE NOTE EARLIER FINISH.

### **Spring Term 2024**

School starts – Tuesday, 2<sup>nd</sup> January 2024

### INSET DAY No.3 – Friday, 9<sup>th</sup> February

February half term - 12 February to 16 February

Last day of term – Thursday 28<sup>th</sup> March – early finish 1.05 pm. PLEASE NOTE EARLIER FINISH.

### **Summer Term 2024**

### INSET DAY No. 4 - Monday 15<sup>th</sup> April

School starts – Tuesday, 16<sup>th</sup> April

### INSET DAY No.5 - Friday, 24<sup>th</sup> May

Summer half term - 27 May to 31 May 2024

Last day of term – Tuesday, 23<sup>rd</sup> July – early finish 1.05 pm. PLEASE NOTE EARLIER FINISH.

## INSET DAYS 2023/24

Witley C of E Infant School will be closed on the following days next academic year for staff training.

1. Friday, 1<sup>st</sup> September 2023
2. Monday, 30<sup>th</sup> October 2023
3. Friday, 9<sup>th</sup> February 2024
4. Monday, 15<sup>th</sup> April 2024
5. Friday, 24<sup>th</sup> May 2024



## Swim School at King Edward's School

*Sally Crathern who operates a swim school from King Edward's School, Witley is running a four day intensive swimming course from April 3rd to 6th. This is for half an hour each morning, any time between 9am and 11am. This course is perfect for any children over the age of 4, from nervous non swimmers to strong club standard. The cost is £44 per child for the four days or £66 for the stronger swimmer doing a 45 minute class. Group sizes are small with teachers in the water with young/weak swimmers. The aim is to improve water confidence, learn new skills and improve on stroke technique. All teachers are DBS checked and have up to date life saving qualifications.*

*For more details about class descriptions and booking forms please go to <https://www.sallyswimschool.com/crash-courses>.*



# THE HEN HOUSE!



## INSET DAY COVER

9.00AM – 5PM\*

Witley Infant School

17<sup>th</sup> April

£52 per child (£3 extra charge for lunch, or  
bring your own packed lunch)

An action packed day of play, arts and crafts,  
games and more!

Booking via <https://wollahwollah.kidsclubhq.co.uk/login>

**CHILDCARE  
VOUCHERS  
ACCEPTED**

FOR MORE INFORMATION CONTACT:

[care@thehen-house.com](mailto:care@thehen-house.com)

[www.thehen-house.com](http://www.thehen-house.com)

*'I really couldn't have asked for anymore and was so happy to know that he had a great time when he was there. He always looked forward to it. So a big thank you!'*  
D.T - Grayswood Parent

\*Longer day possible upon request.

## Culture, Learning and Inspiration since 1888

Haslemere Educational Museum was founded by the eminent physician Sir Jonathan Hutchinson, who began opening his collections to visitors thanks to his belief in education through the observation of physical objects. The museum now operates as an independent charity.

**Permanent galleries** Open Tue-Sat, 10am-4.30pm\*. Entry by donation.

- Natural history collections span mammals, reptiles, birds, botany, shells and insects.
- Geology collections include fossils, rocks and minerals.
- Human history exhibits include an Egyptian mummy, folk art pottery and Roman coins.

**Gardens** Open Tue-Sat, 10am-4.30pm\*. Entry by donation.

Grounds include the lawn, meadow, ha-ha, woodland boardwalk, pond, 18th century gazebo and observation beehive.

**Library opening hours** Tuesdays 10am-3pm  
**Museum shop** Tue-Sat 10am-4.30pm

### Membership benefits

Membership provides an exclusive range of benefits, including generous discounts on talks and events, priority booking and a 10% discount on Museum items in our gift shop. Visit [haslemereuseum.co.uk/support/membership](http://haslemereuseum.co.uk/support/membership) for more information.



Scan to sign up

### Support the Museum

As an independent registered charity, we rely on the generosity of our many supporters to enable us to care for and conserve our collections, deliver an innovative programme of events and exhibitions and inspire lifelong learning. Ways to offer support include becoming a member or making a donation. We also welcome corporate members and sponsors, as well as legacy support. To find out more, visit [haslemereuseum.co.uk/support](http://haslemereuseum.co.uk/support).



\* Winter opening hours until 13 February: 10am-4.30pm. Opening hours from 13 February: 10am-5pm.

Haslemere Educational Museum

78 High Street, Haslemere GU27 2LA | [www.haslemereuseum.co.uk](http://www.haslemereuseum.co.uk) | 01428 642112



@haslemereuseum

Charity No 1071244

# CHILDREN & FAMILIES



# Easter & spring

## Events & activities



## Family Events

### Early Birds

Special openings for families with children who have an Autism Spectrum Condition to come along and enjoy the Museum free from the hustle and bustle of the general public. The galleries will be open and there will be an opportunity to handle special objects. Booking essential. Entry by donation.

**15 February 9-10am** | **3 April 10am-12pm**  
**31 May 9-10am**

**Easter Egg-citement** **EASTER HOLIDAYS!**  
Join us as we get creative and make lots of arts and crafts themed around Easter.

There will also be a special Easter garden trail for children who will be rewarded with a chocolate treat when they find the characters hidden throughout the gardens.

**Tue 4 April 10.30am-1pm**  
£4 | Members £2 | Adults £1

**Creative Corals** **EASTER HOLIDAYS!**  
Look at the corals in our handling event, make a coral picture using printing and draw your very own creature to inhabit it.

**Thu 13 April 10.30am-1pm**  
£4 | Members £2 | Adults £1

### Earth Day / The Wild Escape

Join in as part of our Wild Escape events to celebrate Earth Day. There will be children's activities, information on Wild Escape projects from across Surrey, talks and more!

**Sat 22 April**

### Mill Cottage Farm

The farm comes to Haslemere Museum. A selection of friendly farm animals to feed, groom and stroke in the museum's beautiful garden, along with art activities inside. Access to animals will be restricted for a lunch break.

**Thu 1 June 11am-3pm**  
£5 | Members £3



**Book in  
advance at**

[haslemere-museum.arttickets.org.uk](https://haslemere-museum.arttickets.org.uk)

## Museum Explorers 5-11

### Beautiful Books

Continue World Book Day celebrations with a morning of book related art and crafts.

**Sat 4 March 10.30am-12pm**  
£7 | Members £5 | Accompanying adults £2

### April Fool

Learn the origins of this tradition of practical jokes with a look at some of the most famous April Fool jokes and some silly activities.

**Sat 1 April 10.30am-12pm**  
£7 | Members £5 | Accompanying adults £2

### Picasso

50 years after his death we will look at the Cubist movement that Picasso founded and make our own cubist pictures.

**Thu 6 April 10.30am-12pm**  
£7 | Members £5 | Accompanying adults £2

### Cold Coral & Rocky Reefs

As part of our Wild Escape activities take a look at the Museum's collection of corals and learn about the cold coral and rock reefs surrounding the British Isles, then make some coral inspired artwork.

**Tue 11 April 10.30am-12pm**  
£7 | Members £5 | Accompanying adults £2

### Pond Dipping

Discover the creatures living the Museum's pond and then look at some of them in more detail in the Education Room.

**Tue 30 May 10.30am-12pm**  
£7 | Members £5 | Accompanying adults £2

### Save our Seas

World Ocean day is June 5th and we will be looking at some of the amazing life in our oceans and how we can help protect it.

**Sat 3 June 10.30am-12pm**  
£7 | Members £5 | Accompanying adults £2

## Early Years (under 5)

### There's a Monster Who Eats Books

Listen to this fun story and find out a little about how books are made and how children's books in the past differ to those of today.

**Fri 24 Feb 10.30-11.30am**  
Children £2 | Adults £1

### Mummy!

A look at the Ancient Egyptians through a simple Ancient Egyptian lift-the-flap book and a visit to our Egyptian room, with craft activity.

**Fri 10 March 1.30-2.30pm**  
Children £2 | Adults £1

### Hatch, Egg, Hatch!

How do eggs hatch? Listen to the story to find out and make a nest for your very own chick.

**Fri 24 March 10.30-11.30am**  
Children £2 | Adults £1

### Pond Dipping

As part of our Wild Escape events, discover the amazing unseen creatures living under the water in the Museum's pond.

**Fri 21 April 10.30-11.30am**  
Children £2 | Adults £1

### Swallow Tale

Learn about the incredible journey and life of the swallow and make a simple swallow puppet.

**Fri 5 May 1.30-2.30pm**  
Children £2 | Adults £1

### Harry & the Dinosaurs at the Museum

Join us for this popular story, a look at our fossils in the geology gallery and some dinosaur related colouring.

**Fri 19 May 10.30-11.30am**  
Children £2 | Adults £1



## ALL SAINTS WITLEY



**Saturday 25<sup>th</sup> March**

**3.30 – 5.30pm**

**Easter Fun, Worship and Tea**

**All welcome**

**More details from 01478 681877**



## STORYBOOK

One of our most popular programs, where young children "live and breath" stories out in the wild. Inspired by Dr. Seuss classics, children will be doing everything from creating a life-sized circus to enjoying a "green eggs and ham" experience in nature. With the turn of every day, comes a new story for the children to experience and lots of FUN!

**TimberNook**  
Sensational Experiences

We are super excited to kick off spring 2023 with our Easter holidays program for children age 4 - 11 here at TimberNook Chiddingfold. 9:30 - 12 each morning 3rd - 6th April. For further information please email me at Libbie.palmer@timbernook.com or visit [www.timbernook.com](http://www.timbernook.com)

[www.timbernook.com](http://www.timbernook.com)